



# Health e Connections Newsletter

## What Happens When Doctors Lead And Why It Matters Now

---

**This month's newsletter is packed with powerful insights and practical tools for forward-thinking healthcare leaders.** Start by exploring Dr. Anne Hirsch's timely article on why physician leadership is no longer optional—it's essential. Next, take a closer look at our MAPS program, created specifically for medical administrators seeking to grow and lead with confidence. You'll also want to catch the latest episode of our *Medical Money Matters* podcast, where we unpack real financial strategies for physicians. And if you're looking to sharpen your skills, our curated lineup of educational opportunities is ready when you are.

**Have questions or want to connect?** Reach out to our Director of Sales or email us at [info@healtheps.com](mailto:info@healtheps.com). We're here to help you thrive.

[Contact Us Here](#)

## Prescription for Change: Why Physician Leadership Is the Cure Your Organization Needs

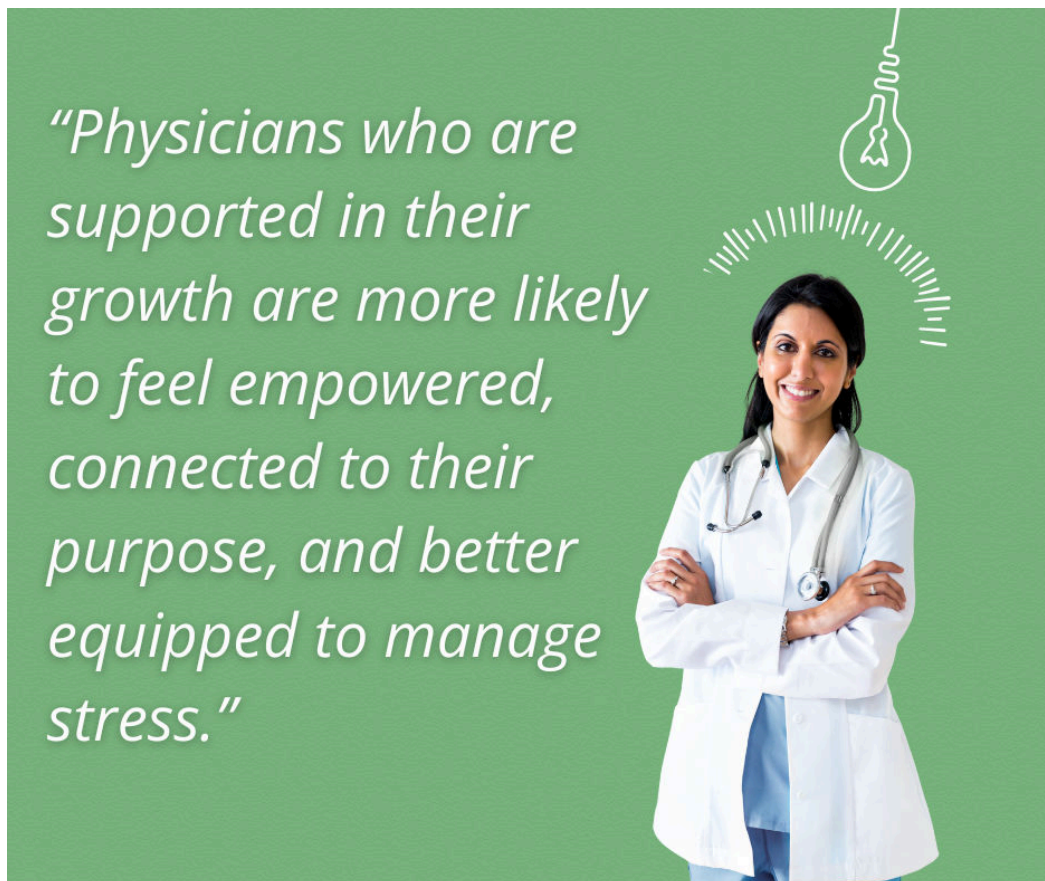
by Anne Hirsch, MD

---

**More than 48% of U.S. physicians reported symptoms of burnout in 2023**, up from over 62% during the 2021 peak—a persistent crisis that won't just fix itself. Even more alarming, burned-out doctors are **over twice as**

**likely** to report making medical errors—posing real risks to patient safety ([pmc.ncbi.nlm.nih.gov](http://pmc.ncbi.nlm.nih.gov)).

Leadership development offers a powerful solution—empowering physicians to better manage stress, sharpen team coordination, and reduce costly mistakes. Dive into the full article for a closer look at how investing in leadership training can protect both patients and practitioners. [Read the full article →](#)



[Read Anne's Article](#)

---

Want to explore physician leadership further or connect with our team? Schedule a [meeting with our Director of Sales](#).

---

**Introducing MAPS**  
**Learn · Discuss · Connect**

---

## Elevate Your Expertise with MAPS — the Medical Administrators Performance Series

***A dynamic, real-world program built to fuel your professional growth and long-term success.***

Whether you're aiming to sharpen leadership skills, gain new insights, or build meaningful professional connections, MAPS offers a flexible, engaging experience tailored to the realities of your role.

Each month, you'll:

- 🔍 Learn – Dive into a self-paced online course during the first two weeks of the month
- 💬 Discuss – Join a live, expert-led group session with peers and industry leaders
- 🤝 Connect – Get one-on-one mentorship from a seasoned advisor matched to your practice's unique needs

This isn't just another course—it's a community of growth-minded professionals committed to real-world impact. Ready to grow with us?

[Click to Learn More](#)

health  practices



## Tune In: Medical Money Matters Podcast with Jill Arena

**If you're a physician navigating the business side of outpatient care,** *Medical Money Matters* should be on your playlist. This weekly podcast cuts through the complexity of healthcare finance with real-world advice and practical strategies. Hosted by Jill Arena, CEO of Health e Practices, each

episode tackles topics like negotiating insurance contracts, safeguarding against embezzlement, and making smart, high-stakes purchases. With insights from seasoned experts, you'll gain the tools to lead a financially healthy, operationally efficient practice—and make confident decisions in today's ever-changing healthcare landscape.



## Continuing Education

**Educational programs for administrative and medical staff include:**

- [Front Office Revenue Cycle Education \(FORCE\)](#): Understanding the impact your front desk has on your clinic's bottom line
- [Revenue Cycle Leadership Series \(RCLS\)](#): Integrating best practices in financial and revenue cycle management
- [Medical Administrators Performance Series \(MAPS\)](#): Taking leadership performance to the next level
- [Physician Leadership Project \(PLP\)](#): Building a confident, skilled, and well-networked community of physician leaders

Visit our website to see these programs and more!

[Visit Our Website](#)

Have questions about growing your practice, improving your processes, or developing your staff? [Book a Discovery Call here](#) or email

[info@healtheps.com](mailto:info@healtheps.com)

Was this email forwarded to you? [Subscribe here](#)



Health e Practices, PO Box 1602, Lake Oswego, OR 97035, 877-394-2750

[Unsubscribe](#) [Manage preferences](#)