



Health e Connections Newsletter

Safeguard Your Practice: Compliance & Leadership Insights

This month at Health e Practices, we're serving up insights that matter. Senior Consultant Jodi Faustlin shares smart, actionable strategies for protecting PHI. We're heading back into "The Pitt" for leadership lessons you can put to work today. You'll also get a fresh look at MAPS and how it can take your practice to the next level. Plus, hear straight from our CEO in two powerful podcast interviews—one with MGMA's *Women in Healthcare*, the other on *Medical Money Matters*. And don't miss our latest educational opportunities to help your team grow and thrive.

We hope you enjoy the read and reach out if you have any questions! [Connect with our Director of Sales](#), or email us at info@healtheps.com.

[Schedule a Consultation](#)

Compliance Corner - Security and Passwords

by Jodi Faustlin, MPA, JM, CHC, FACHE, FACMPE, HRMC, RCMC

Did you know April 30 was **WORLD PASSWORD DAY?**

Established in 2013, this day highlights the importance of protecting electronic information.



In healthcare, safeguarding protected health information (PHI) is required by law.

Under HIPAA Security Rule (45 CFR Part 160 and C Subparts A and C of Part 164.), covered entities must implement Administrative, Physical, and Technical Safeguards.

TECHNICAL SAFEGUARDS include:



Access controls to permit only authorized users



Encryption of data to prevent unauthorized access



Use of strong, unique **PASSWORDS**

Learn more in Jodi Faustlin's article

[Read the Full Article](#)

Introducing MAPS
Learn · Discuss · Connect

Elevate Your Expertise with MAPS — the Medical Administrators Performance Series

A dynamic, real-world program built to fuel your professional growth and long-term success.

Whether you're aiming to sharpen leadership skills, gain new insights, or build meaningful professional connections, MAPS offers a flexible, engaging experience tailored to the realities of your role.

Each month, you'll:

🔍 Learn – Dive into a self-paced online course during the first two weeks of the month

💬 Discuss – Join a live, expert-led group session with peers and industry leaders

🤝 Connect – Get one-on-one mentorship from a seasoned advisor matched to your practice's unique needs

This isn't just another course—it's a community of growth-minded professionals committed to real-world impact. Ready to grow with us?

[Click to Learn More](#)

health  practices



Burnout and Resilience

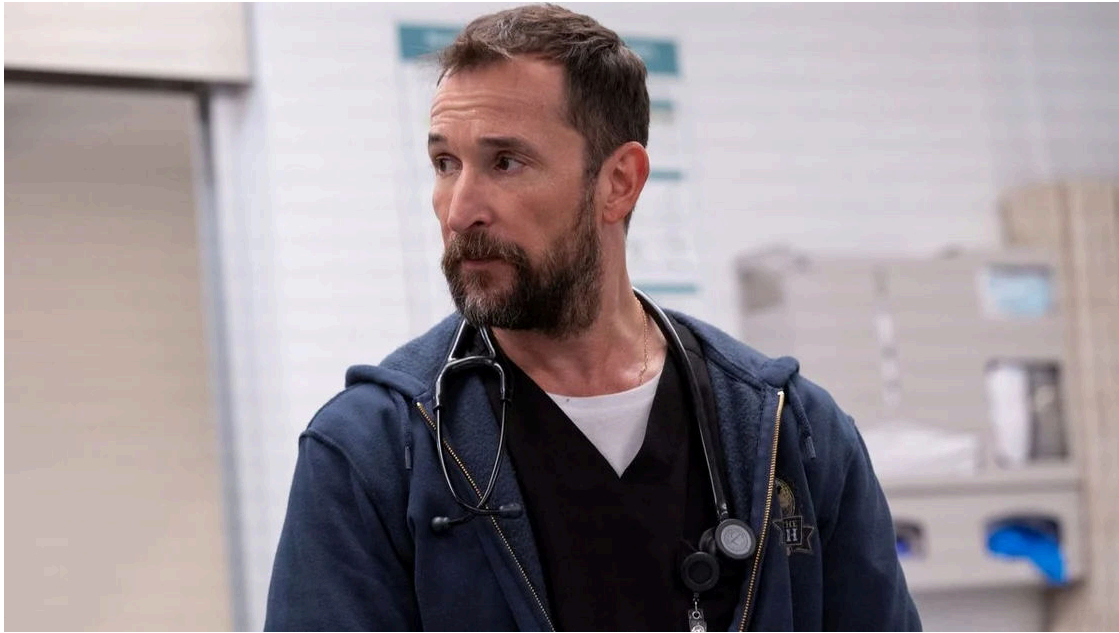


Photo: Noah Wyle as Dr. Michael "Robby" Robinavitch in *The Pitt*.

Is *The Pitt* just drama—or a wake-up call for healthcare?

What if a hospital drama could actually teach us something real? *The Pitt* offers more than entertainment—it delivers powerful insights for healthcare leaders, clinicians, and patients alike.

At the heart of it is Dr. Michael "Robby" Robinavitch, whose journey reveals the deep need for empathy, psychological safety, and strong leadership in healthcare environments.

Health e Practices' Director of Consulting, [Eric Schulz, MBA](#), breaks it down—exploring what this fictional world can teach us about the very real challenges in our own.

[Read the Article](#)

Our CEO Jill Arena Featured on MGMA's *Women in Healthcare* Podcast

We're thrilled to share that CEO **Jill Arena** recently joined host **Adrienne Palmer Lloyd, MHA, FACHE**, on MGMA's *Women in Healthcare* podcast for an insightful discussion on elevating financial literacy among physicians.

During the episode, Jill emphasized the importance of creating a supportive environment for financial education:

“We need to create safe spaces where physicians can ask financial questions without fear of judgment. It’s about empowering them with the knowledge to make informed decisions for their practices and patients.”

~Jill Arena

[Listen to the Full Episode](#)

Continuing Education

Educational programs for administrative and medical staff include:

- [Front Office Revenue Cycle Education \(FORCE\)](#): Understanding the impact your front desk has on your clinic's bottom line
- [Revenue Cycle Leadership Series \(RCLS\)](#): Integrating best practices in financial and revenue cycle management
- [Medical Administrators Performance Series \(MAPS\)](#): Taking leadership performance to the next level
- [Physician Leadership Project \(PLP\)](#): Building a confident, skilled, and well-networked community of physician leaders

Visit our website to see these programs and more!

[Visit Our Website](#)

Have questions about growing your practice, improving your processes,
or developing your staff? [Book a Discovery Call here](#) or email
info@healtheps.com

Was this email forwarded to you? [Subscribe here](#)



Health e Practices, PO Box 1602, Lake Oswego, OR 97035, 877-394-2750

[Unsubscribe](#) [Manage preferences](#)