



Health e Connections Newsletter

Happy Holidays!

We're thrilled to share with you our final newsletter of 2024! With the New Year quickly approaching, we know you're likely already thinking ahead to 2025 and what adjustments you should make to your budget. If you want some actionable tips, read our featured article below. **Navigating Financial Success: Why Every Practice Needs a Budget**, written by our CEO, Jill Arena, will help you start the New Year with a **clear financial roadmap**.

After you read the article, make sure to check out the [Medical Money Matters](#) podcast and unlock tips to **grow your practice**. Finally, we invite you to explore our wide range of educational programs that will enhance your leadership skills and teach you how to optimize the revenue cycle within your clinic.

[We're eager to hear from you!](#) Let us know about the topics you want to know more about and would like to see in our upcoming newsletters or listen to on our podcast.

Feature Article

Navigating Financial Success: Why Every Practice Needs a Budget

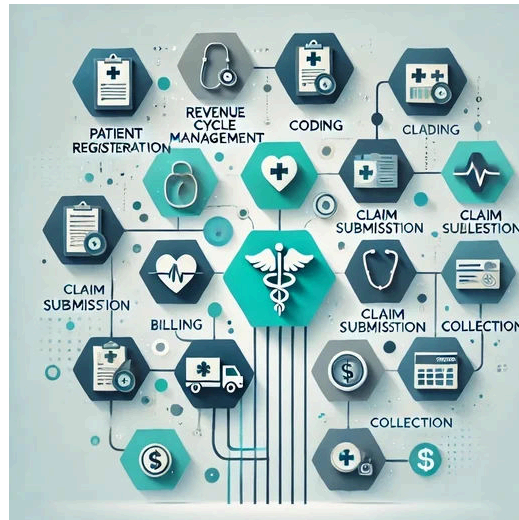
by Jill Arena

So, what's all this hullabaloo about budgets? And why would you want one? Consider that a budget is like your **financial GPS**. By utilizing one, you can determine where you'd like to go financially, and then you can assess your progress against that plan.

Important tips include:

1. Understand how seasonality impacts your practice's financial health and money flow,
2. Use conservative estimates for revenue and expenses to avoid disappointment, and
3. Analyze past performance to inform future budgeting.

[Read the Feature Article Now](#)



Did you Know?

Effective Revenue Cycle Management (RCM) is the **heartbeat of a thriving clinic**. From patient registration to final payment, **every step** in the revenue cycle impacts your bottom line.

In the U.S., clinics face unique challenges - rising claim denials, complex insurance requirements, and increased patient responsibility. That's where a robust RCM strategy comes into play. Streamlining processes like coding, billing, and collections can reduce errors, accelerate payments, and improve financial health.

At Health e Practices, we specialize in optimizing RCM, helping clinics **achieve MGMA 90th percentile performance** on key metrics. Ready to strengthen your revenue flow?

[Let's Talk About Your Revenue Cycle](#)

Explore a wealth of expert advice and insider knowledge on private practice medicine by visiting Jill Arena's LinkedIn - [click here to see Jill's posts](#)



The advertisement features a dark blue background with a purple circular graphic on the right side showing hands using a calculator and a pen over financial documents. The text is white and yellow. The logo for 'health e practices' is in the top left. The main headline reads 'WE HELP YOU MANAGE YOUR BUDGET'. Below this, there are six service items, each with a green checkmark icon: Financial Service, Financial Advice, Profitability Assessment, Budgeting, Cash Flow Analysis, and Identify Growth Opportunities. A yellow 'LEARN MORE' button is positioned below the services. At the bottom, there are three contact options: a phone icon with the number 360-601-7007, an email icon with the address info@healtheps.com, and a globe icon with the website www.healtheps.com.

health e practices

WE HELP YOU MANAGE YOUR BUDGET

- ✓ Financial Service
- ✓ Financial Advice
- ✓ Profitability Assessment
- ✓ Budgeting
- ✓ Cash Flow Analysis
- ✓ Identify Growth Opportunities

[LEARN MORE](#)

360-601-7007 | info@healtheps.com | www.healtheps.com

Medical Money Matters Podcast

Join Jill Arena, CEO of Health e Practices, and other healthcare industry experts as they share their insights, provide actionable tips, and discuss the latest resources that will help you master the financial and business aspects of your practice.

This month's episodes include:

- **105:** Managing Competing Priorities and Staying True to Your Strategic Plan
- **106:** Spend to Succeed: Mastering Big Investments in Your Medical Practice
- **107:** Revolutionizing Work: How Offshoring, AI, and RPA Empower Your Workforce - A Conversation with Josie Van Scholten
- **108:** The Financial Prescription - Smart Strategies for Budgeting in Medical Practices

[Listen Now!](#)

Prefer reading?

[Check out our blog](#) where you can find detailed transcripts and more

Continuing Education

Transform your practice through professional development! Educational programs for administrative and medical staff include:

- [Revenue Cycle Leadership Series \(RCLS\)](#): Integrating best practices in financial and revenue cycle management
- [Medical Administrators Performance Series \(MAPS\)](#): Taking leadership performance to the next level
- [Front Office Revenue Cycle Education \(FORCE\)](#): Understanding the impact your front desk has on your clinic's bottom line
- [Physician Leadership Project \(PLP\)](#): Building a confident, skilled, and well networked community of physician leaders

[Visit our website](#) to see these programs and more!

Have questions about growing your practice, improving your processes, or developing your staff? [Book a Discovery Call here](#) or email info@healtheps.com

Was this email forwarded to you? [Subscribe here!](#)



Health e Practices, PO Box 1602, Lake Oswego, OR 97035, 877-394-2750

[Unsubscribe](#) [Manage preferences](#)